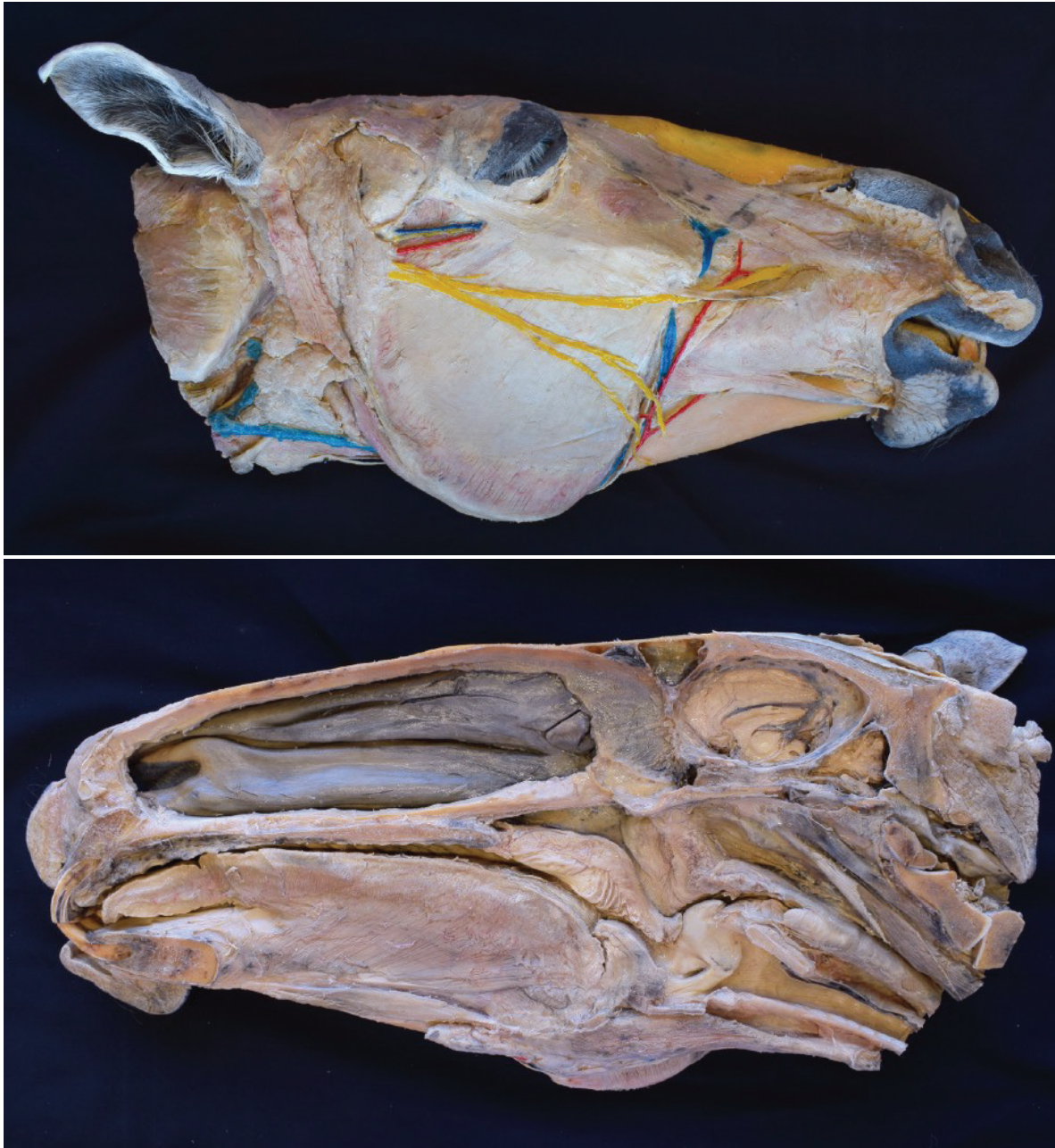


VP10000 Horse head (half sagittal section)



VP10000 Horse sagittal half-head - superficial lateral dissection and sections of cavities.

This horse half-head shows a superficial dissection on the lateral aspect and a middle sagittal section on the medial aspect.

On the lateral side the skin has been removed, except on the nostrils, lips and ear. In the rostral part of the dissection are the muscles of facial mimicry. The caudal part of the dissection is occupied by the masseteric muscle with the course of the buccal branches of the facial nerve. In the notch of the facial vessels, the facial artery and vein are located together with the parotid duct. In the middle sagittal section, the nasal cavity is occupied by the nasal conchas. The vomer bone establishes the choanae as transit to the nasopharynx. The oral cavity is limited dorsally by the hard palate, which continues caudally as the soft palate. The epiglottis, arytenoid cartilage, and cricoid cartilage limit the laryngeal cavity. The laryngopharynx is occupied by the esophageal vestibule dorsal to the larynx and the trachea. The topography of the encephalon and cerebellum is also exposed.